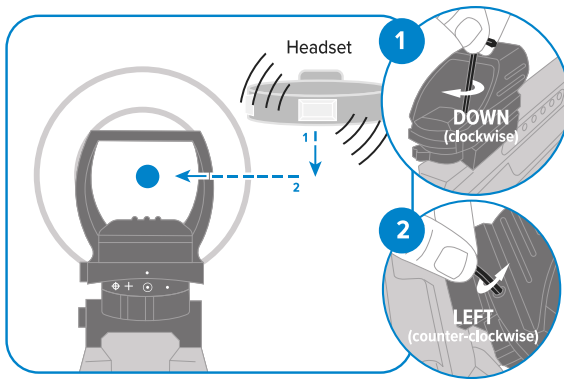


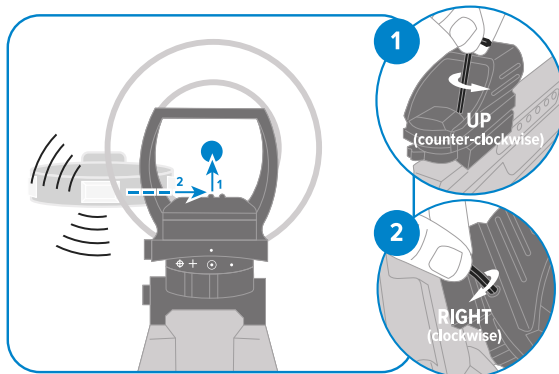
HOW DO I SIGHT IN MY SCOPE?



EXAMPLE 1

THE HEADSET NEEDS TO MOVE DOWN AND TO THE LEFT TO BE CENTERED

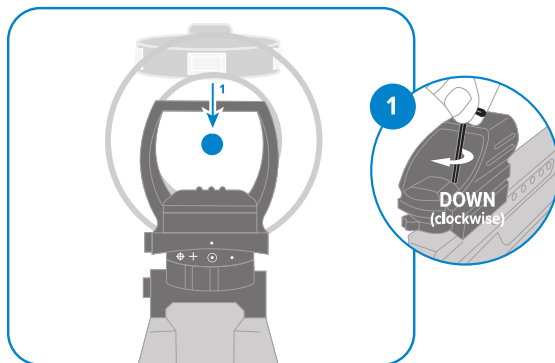
- 1 Rotate the top screw clockwise to move the headset down.
- 2 Rotate the side screw counter-clockwise to move the headset left.



EXAMPLE 2

THE HEADSET NEEDS TO MOVE UP AND TO THE RIGHT TO BE CENTERED

- 1 Rotate the top screw counter-clockwise to move the headset up.
- 2 Rotate the side screw clockwise to move the headset right.



EXAMPLE 3

THE HEADSET NEEDS TO MOVE DOWN TO BE CENTERED

- 1 Rotate the top screw clockwise to move the headset down.

NOTE: When playing outdoors, lighting conditions vary and may effect your range. For example full sunlight will have a shorter range, cloudy skies, in the woods or at night. We recommend you adjust your scope based on your current playing conditions.



**TYPICAL EXPECTED MAX RANGE
IN SUNLIGHT IS 600 FEET**

